

MLS Area HS

Residential Statistics



August 2021

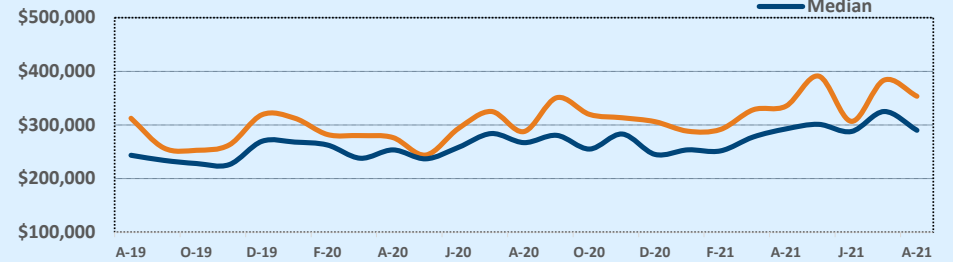
Listings	This Month			Year-to-Date		
	Aug 2021	Aug 2020	Change	2021	2020	Change
Single Family Sales	41	39	+5.1%	372	329	+13.1%
Condo/TH Sales	10	4	+150.0%	38	19	+100.0%
Total Sales	51	43	+18.6%	410	348	+17.8%
New Homes Only	3	8	-62.5%	61	53	+15.1%
Resale Only	48	35	+37.1%	349	295	+18.3%
Sales Volume	\$18,025,435	\$12,366,515	+45.8%	\$137,086,289	\$100,218,495	+36.8%
New Listings	87	79	+10.1%	558	419	+33.2%
Pending	36	45	-20.0%	156	364	-57.1%
Withdrawn	4	5	-20.0%	25	25	--
Expired	--	1	--	3	16	-81.3%
Months of Inventory	1.5	2.9	-48.3%	N/A	N/A	--

Price Range	This Month			Year-to-Date		
	New	Sales	DOM	New	Sales	DOM
\$149,999 or under	3	1	19	12	12	47
\$150,000- \$199,999	6	6	8	44	30	11
\$200,000- \$249,999	5	8	17	83	87	29
\$250,000- \$299,999	18	12	5	155	103	33
\$300,000- \$349,999	14	11	14	79	61	28
\$350,000- \$399,999	6	4	14	53	32	35
\$400,000- \$449,999	7	5	9	34	32	39
\$450,000- \$499,999	6	2	34	24	12	41
\$500,000- \$549,999	9	--	--	22	8	36
\$550,000- \$599,999	2	--	--	7	8	102
\$600,000- \$699,999	3	--	--	11	11	86
\$700,000- \$799,999	7	--	--	20	7	25
\$800,000- \$899,999	--	--	--	4	2	12
\$900,000- \$999,999	--	1	9	2	1	9
\$1M - \$1.99M	1	--	--	6	2	4
\$2M - \$2.99M	--	1	36	2	2	18
\$3M+	--	--	--	--	--	--
Totals	87	51	12	558	410	33

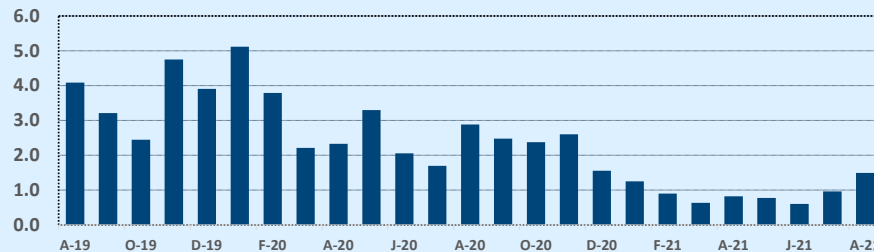
Average	This Month			Year-to-Date		
	Aug 2021	Aug 2020	Change	2021	2020	Change
List Price	\$345,048	\$292,451	+18.0%	\$328,399	\$295,206	+11.2%
List Price/SqFt	\$185	\$160	+15.6%	\$180	\$156	+15.5%
Sold Price	\$353,440	\$287,593	+22.9%	\$334,357	\$287,984	+16.1%
Sold Price/SqFt	\$192	\$157	+21.9%	\$184	\$152	+20.7%
Sold Price / Orig LP	104.1%	97.7%	+6.5%	103.9%	96.6%	+7.5%
Days on Market	12	79	-84.3%	33	76	-55.9%

Median	This Month			Year-to-Date		
	Aug 2021	Aug 2020	Change	2021	2020	Change
List Price	\$275,000	\$269,900	+1.9%	\$275,000	\$261,078	+5.3%
List Price/SqFt	\$173	\$153	+13.0%	\$172	\$149	+15.4%
Sold Price	\$290,000	\$266,970	+8.6%	\$285,495	\$257,903	+10.7%
Sold Price/SqFt	\$179	\$154	+16.1%	\$177	\$147	+20.5%
Sold Price / Orig LP	102.0%	98.0%	+4.1%	102.0%	98.0%	+4.1%
Days on Market	6	51	-88.2%	8	42	-81.0%

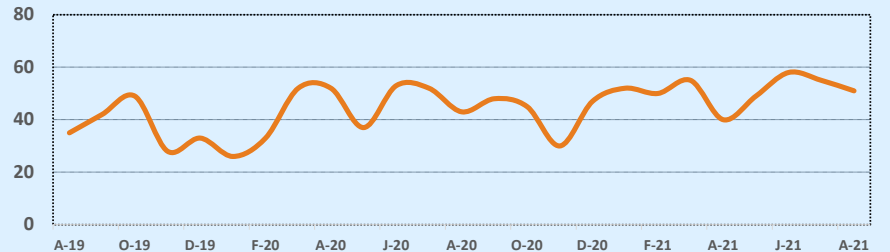
Average & Median Sales Price - Last Two Years



Months of Inventory - Last Two Years



Number of Sales - Last Two Years



Based on information from the Austin Board of REALTORS® (alternatively, from ACTRIS). Neither the Board nor ACTRIS guarantees or is in any way responsible for its accuracy. The Austin Board of REALTORS®, ACTRIS and their affiliates provide the MLS and all content therein "AS IS" and without any warranty, express or implied. Data maintained by the Board or ACTRIS may not reflect all real estate activity in the market.